

Disney's DINOSAUR



**SURVIVE IT ON
THE PLAYSTATION™2 GAME CONSOLE**



EXTINCTION IS NOT AN OPTION IN DISNEY'S DINOSAUR. MASTER THE SURVIVAL SKILLS OF HUNTER, FLEE, AND ZINI - MARCH ACROSS 11 TERRIFYING 3D LANDSCAPES RAGING WITH LAVA, RAPTORS, CARNOTHAURS AND MORE. IT'S THE ULTIMATE TREK FOR SURVIVAL!

Ubi Soft Entertainment Inc., 425 Third Street, San Francisco, CA 94107
 © Disney ©2000 Ubi Soft, Inc. Ubi Soft Entertainment is a trademark of Ubi Soft, Inc.
 Ubi Soft and the Ubi Soft Entertainment logo are registered trademarks of Ubi Soft, Inc. All Rights Reserved.

Sega is registered in the US Patent and Trademark Office. Sega, Dreamcast and the Dreamcast logo are either registered trademarks or trademarks of Sega Corporation in the United States and other countries.
 (except Argentina, Paraguay and Uruguay) Will not appear with any other revisions or Sega Dreamcast software.
 Product covered software or more of the following: U.S. Patents: 5,802,011; 5,526,778; 5,727,818; 5,891,133; 4,842,419; 4,941,814; 4,822,076; 5,361,331; Japanese Patent No. 2078551; Patents pending in U.S. and other countries.
 Creative Patent No. 1,942,228. The college logo is a trademark of the Creative Digital Bellwether Associates.
 Sega of America Dreamcast, Inc. P.O. Box 7500, San Francisco, CA 94113.

SEGA

Dreamcast

Disney's
DONALD DUCK

"GOIN' *! QUACKERS"



Ubi Soft
www.ubisoft.com

Disney
INTERACTIVE
D

EVERYONE
E
CONTENT RATED BY
ESRB
© 1999

WARNINGS Read Before Using Your Sega Dreamcast Video Game System

CAUTION

Anyone who uses the Sega Dreamcast should read the operating manual for the software and console before operating them. A responsible adult should read these manuals together with any minors who will use the Sega Dreamcast before the minor uses it.

HEALTH AND EPILEPSY WARNING

Some small number of people are susceptible to epileptic seizures or loss of consciousness when exposed to certain flashing lights or light patterns that they encounter in everyday life, such as those in certain television images or video games. These seizures or loss of consciousness may occur even if the person has never had an epileptic seizure.

If you or anyone in your family has ever had symptoms related to epilepsy when exposed to flashing lights, consult your doctor prior to using Sega Dreamcast.

In all cases, parents should monitor the use of video games by their children. If any player experiences dizziness, blurred vision, eye or muscle twitches, loss of consciousness, disorientation, any involuntary movement or convulsion, IMMEDIATELY DISCONTINUE USE AND CONSULT YOUR DOCTOR BEFORE RESUMING PLAY.

To reduce the possibility of such symptoms, the operator must follow these safety precautions at all times when using Sega Dreamcast:

- Sit a minimum of 6.5 feet away from the television screen. This should be as far as the length of the controller cable.
- Do not play if you are tired or have not had much sleep.
- Make sure that the room in which you are playing has all the lights on and is well lit.
- Stop playing video games for at least ten to twenty minutes per hour. This will rest your eyes, neck, arms and fingers so that you can continue comfortably playing the game in the future.

OPERATING PRECAUTIONS

To prevent personal injury, property damage or malfunction:

- Before removing disc, be sure it has stopped spinning.
- The Sega Dreamcast GD-ROM disc is intended for use exclusively on the Sega Dreamcast video game system. Do not use this disc in anything other than a Sega Dreamcast console, especially not in a CD player.
- Do not allow fingerprints or dirt on either side of the disc.
- Avoid bending the disc. Do not touch, smudge or scratch its surface.
- Do not modify or enlarge the center hole of the disc or use a disc that is cracked, modified or repaired with adhesive tape.
- Do not write on or apply anything to either side of the disc.
- Store the disc in its original case and do not expose it to high temperature and humidity.
- Do not leave the disc in direct sunlight or near a radiator or other source of heat.
- Use lens cleaner and a soft dry cloth to clean disc, wiping gently from the center to the edge. Never use chemicals such as benzene and paint thinner to clean disc.

PROJECTION TELEVISION WARNING

Still pictures or images may cause permanent picture tube damage or mark the phosphor of the CRT. Avoid repeated or extended use of video games on large-screen projection televisions.

SEGA DREAMCAST VIDEO GAME USE

This GD-ROM can only be used with the Sega Dreamcast video game system. Do not attempt to play this GD-ROM on any other CD player; doing so may damage the headphones and/or speakers. This game is licensed for home play on the Sega Dreamcast video game system only. Unauthorized copying, reproduction, rental, public performance of this game is a violation of applicable laws. The characters and events portrayed in this game are purely fictional. Any similarity to other persons, living or dead, is purely coincidental.

TABLE OF CONTENTS

GETTING STARTED.....	2
CONTROLS	3
THE STORY	5
THE GAME	7
THE MENUS	8
IN-GAME SCREENS	9
GYRO-GAMMA-TUBAL-TELEPORT	10
DONALD'S MOODS	11
COLLECTIBLES	12
CHARACTERS	13
DONALD'S ENEMIES	17
CREDITS.....	19

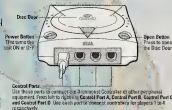


GETTING STARTED

Insert the Disney's Donald Duck Goin' Quackers GD-Rom into your Sega Dreamcast™ console. Close the disc door and turn the unit on. When the title screen appears, press the START Button to access the menu for selecting the VMU:

- Disney's Donald Duck Goin' Quackers is a 1 player game. Before turning the Sega Dreamcast power On, connect the controller or other peripheral equipment into the control ports of the Sega Dreamcast.
- To return to the title screen at any point during game play, simultaneously press and hold the A, B, X, Y and Start buttons. This will cause Sega Dreamcast to soft-reset the software.

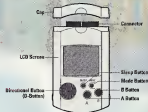
SEGA DREAMCAST HARDWARE UNIT



SAVING AND LOADING

- To save a game or resume a saved game, insert a memory card (VMU) into the expansion socket.
- Choose the desired expansion socket location with the Analog Thumb Pad. Press the A Button to select, then follow the instructions on the screen to enter your initials.
- It is only possible to load a saved game if the VMU is correctly inserted into the console before the power button is put into the on position.

SEGA DREAMCAST VISUAL MEMORY UNIT (VMU)



- The number of memory blocks required to save game files varies according to the type of software and content of files to be saved. In Disney's Donald Duck Goin' Quackers, 4 blocks are required to save each game (including its options settings).
- If you do not have a VMU, press the B Button. You can neither load nor save your game. We recommend that you use a VMU.

Note: While saving a game file, never turn OFF the Sega Dreamcast power, remove the memory card or disconnect the controller.

CONTROLS

Never touch the Analog Thumb Pad or Triggers L/R while turning the Sega Dreamcast™ power on. Doing so may disrupt the controller initialization procedure and result in malfunction. If the Analog Thumb Pad or Triggers L/R are accidentally moved while turning the Sega Dreamcast power on, immediately turn power off and then on again making sure not to touch the controller.

To return to the title screen at any point during game play, simultaneously press and hold the A, B, X, Y and Start Buttons. This will cause the Sega Dreamcast™ to soft-reset the software.

SEGA DREAMCAST CONTROLLER

Overhead View



Forward View



CONTROL

Directional Buttons

Start Button

A Button

*The longer you hold the button, the higher Donald will go

B Button

A+A Button

*All you have to do is to press the A Button another time, when Donald is still in the air.

FUNCTION

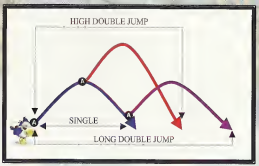
Move/Run

Pause

Jump

Attack

Double-Jump



THE STORY

THE DUCKBURG NEWS SPECIAL EDITION **FAMOUS REPORTER DAISY DISAPPEARS!**

June 5 - The famous reporter, Daisy, was reported missing yesterday, after the transmission of the most daring report of her career was inexplicably interrupted. To everyone's amazement, Daisy had succeeded in getting into the secret temple of Merlock, the terrible magician. Yesterday morning, millions of television viewers were watching her live report on the local network. Unfortunately, just as Daisy was about to show us the fearful Merlock in his temple for the first time, catastrophe struck: Merlock discovered her. The picture broke up and no one knows what has become of Daisy. The population is dismayed. Rumor has it that the illustrious Donald Duck is hot on the trail to rescue Daisy. We hope to have more details soon.



Daisy, the famous journalist reported missing.



THE DUCKBURG NEWS SPECIAL EDITION

DONALD DUCK TO RESCUE DAISY!

June 6 - The now illustrious and impetuous Donald Duck has undertaken a perilous journey around the world to rescue Daisy. Our newspaper learned of this while interviewing Gyro Gearloose, a personal friend of both Daisy and Donald Duck. Thanks to one of Gyro's inventions, Donald will be able to be teleported across the world, and right into Merlock's temple to save Daisy. Here's what Gyro Gearloose had to say to us: "My teleporter will be able to send Donald to Merlock's temple, no problem. But first, we have to make it more powerful. That's why Donald is going around the world. I can't tell you anything more than that..." Remember that Daisy has been missing for 2 days (see our article of June 5). Everything points to her being taken prisoner by the horrifying Merlock. The whole world has their fingers crossed in the hope that the unfailing Donald Duck can save her in time. More details in our next editions.

Donald Duck, in a picture taken for "Our Heroes" magazine.

The inventor, Gyro Gearloose, in "The Dictionary of Great Thinkers".

THE GAME

MAIN GOALS

The Main Goal

Donald must complete the following three tasks to finish Disney's Donald Duck Goin' Quackers successfully.

Gather the pieces of the Boss Warp Pad.

First, you must gather the four pieces of the boss warp pad. The pieces were stolen and hidden in each of the 4 regular levels by the evil Merlock. Donald has to travel through all of the levels to find the pieces and put them back together. Thus, Gyro can teleport Donald to the world's summit, where he must defeat the Boss, install each of Gyro's Weather-Vanes and in turn rescue Daisy.

Find the nephews' toys

Donald also needs to rescue his nephews captured toys. Merlock has cast an evil spell on Huey, Dewey, and Louie's toys, and it's up to their Uncle Donald to rescue them. Donald must break the magic spell and take back the toys. Once he's succeeded, the nephews will be so happy that they'll let Donald enter the Bonus Level!!!

Beat Gladstone's time

Once you've successfully completed the Bonus Level, you'll be able to go into the Beat-the-clock mode. Gladstone then launches a challenge to Donald, to beat his record time on each level. Donald has to replay all four worlds and beat Gladstone's record time for each one. It will take hard work from Donald, but when he succeeds, Gladstone will give him a reward...new golden threads! These can be used in one of Gyro's other inventions to get a special reward.

THE MENUS

MAIN MENU

New game

Start a new adventure with Donald.

4 New Game slots are available - they become saved game slots.

Load game

Allows you to load a previous game.

Delete Game

Deletes a previously saved game.

Options

Leads you to another menu where you can adjust some game components (sounds, controls, etc).



SEGA DREAMCAST JUMP PACK™



OPTION MENU

You can customize :

- Music Volume
- Sound FX Volume
- Stereo/Mono Sound
- Jump Pack

Insert the Jump Pack into expansion socket 2 of the Sega Dreamcast controller. If it is inserted into Expansion socket 1, it does not lock into place and may fall out during game play or otherwise inhibit game operation.

To activate the Jump Pack, choose Jump Pack in the Option menu and select ON with the Analog Thumb Pad.

IN-GAME SCREENS

PERMANENT VIEW

During the game, you'll see the following elements on the screen:

Life Counter: The number of lives remaining (The expression on Donald's face indicates Donald's current mood.)

Star Counter: The number of Stars collected

Time Elapsed: Counts down seconds (appears only in Gladstone Time Attack)

Toys: The number of Toys collected (appears only when a toy is collected)

Magic Book Timer: When Donald breaks the spell from Merlock's magic spell book, a timer is activated. This indicates how much time remains to find and recover each toy. (This timer only appears once the evil spell is broken.)



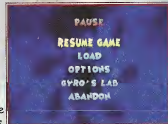
PAUSE

When you press the Start button during a level, the following options appear :

- Resume: return to the game
- Load: load a previous game
- Options: go to the Option Menu
- Gyro's Lab: go to Gyro's Lab
- To Quit the Game: once in Gyro's Lab, a menu appears and you can choose Quit

INVENTORY SCREEN

When you press the Y Button or the Trigger R, the inventory screen appears, indicating how many toys remain in the level.



GYRO-GAMMA-TUBAL-TELEPORT

GYRO'S TELEPORT

Here's the astonishing invention!!!

Allows you to:

- Access worlds and maps



THE OUTFIT SWAPPER

Allows you to:

- Change costume



THE BIG SCREEN

Press the Start Button to access a Menu that allows you to:

Resume: resume your game

Delete: delete a previous game

Options: leads you to the Options menu

Save: save your game

Load: load a previous game



DONALD'S MOODS

HAPPY

This is Donald's normal status. You have to keep him Happy as long as you can.
Hit points: 2

HYPER-DONALD

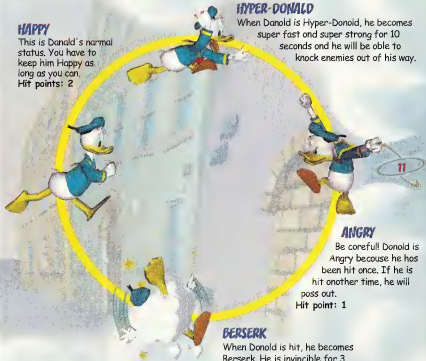
When Donald is Hyper-Donald, he becomes super fast and super strong for 10 seconds and he will be able to knock enemies out of his way.

ANGRY

Be careful! Donald is Angry because he has been hit once. If he is hit another time, he will pass out.
Hit point: 1

BERSERK

When Donald is hit, he becomes Berserk. He is invincible for 3 seconds, so enemies beware!



COLLECTIBLES



Yellow Stars

Collect 100 Stars, you get an extra-life!



Blue Stars

One Blue Star equals 10 Yellow Stars.



Red Stars

One Red Star equals 20 Yellow Stars.



Courier box gadget :

You can find them in the air or on the ground. Destroy the box and you will find Stars. Try to get them all: they will show you the way to go.



Checkpoints

This is an auto save mechanism which saves Donald's position inside a level. If Donald passes out, he will reappear at the location of the last checkpoint he passed.



Toy

In each level, you must find three of the nephew's captured Toys. Most of them are found in the hidden sections. Be careful!



Merlock's Spell Book

You have to destroy the Magic Book before getting a toy. It's the only way to break Merlock's spell on the toy!



Extra-Life

Collect a free life.



Milkshake

It's a power-up allowing Donald to get in a better mood. He is very keen on it!



Warp Boss

You must collect 4 of these per world to open up the Boss map.



Dreamcast.

WARRANTY REGISTR

NOTE: You may also register by phone (415) 547-4028 / fax (415) 547-4001 or on t

Name _____

Address _____

City _____ State _____ Zip _____

E-Mail Address _____ Phone _____

Where did you purchase your copy of Disney's Donald Duck Goin' Quackers

Which gaming publications do you read?

Which gaming consoles do you own/plan to buy within the next 6 months?

Nintendo® 64 PlayStation® game console

other _____

ATION CARD

ve web at www.ubisoft.com

Apt. # _____

Sex _____ Age _____

25

hi

ar



CHARACTERS

DONALD DUCK

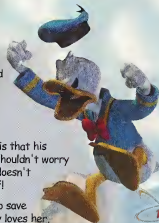
Donald is impatient and aggressive, it's true! And what a temper, wow! But, more importantly, Donald is also a devoted and sincere friend. He won't let anything stop him from helping them. Daisy's in trouble? Donald's already on his way!

It's no secret: Donald loves Daisy. The problem is that his cousin, Gladstone, fancies her, too! But, Donald shouldn't worry too much: Daisy loves being with him... when he doesn't lose his cool! He'd better keep an eye on himself!

Today: Donald will go to the ends of the earth to save Daisy! And it's not just to impress her. He really loves her, and will rest, only when he knows she's safe...

Goal in life: To save Daisy!

Motto: "I'm the only one who can save Daisy!!!"



15

DAISY

Daisy is an outstanding reporter, respected by everyone. She's a perfectionist, and never stops working on something until it's exactly the way she wants it. She's the same way with Donald. After all these years, she still thinks she can change his character! Donald should watch out; Daisy can have violent fits of temper!!!

Today: Daisy has one thing in mind: Getting the news scoop of the century by sneaking into the temple of Merlock, the terrible magician!



Goal in life: Turning Donald into an elegant boyfriend, who is quiet and attentive!

Motto: "Give me liberty and I'll give you the world... and a great news story!!"



14

GYRO GEARLOOSE

Gyro likes to believe he 'invented it all'! Unfortunately, his inventions often look strange and unreliable. But, with a little help from Donald, they should be able to get them to work. For Donald, Gyro is a trusted guide and ally.

Today: Daisy's his friend, and she's in trouble! Thanks to his invention, the Gyro-Gamma-Tubal-Teleport, Gyro guides Donald to the ends of the earth to save Daisy.

Goal in life: Inventing things that make the world a better place to live.

Motto: "You'll see, one day I'll invent an invention of an inventor I invented!"



15

HUEY, LOUIE AND DEWEY

The nephews are inseparable, and love to play practical jokes! Their target is almost always Uncle Donald! They do it because they really love to push Donald's buttons. They're not really mean and they do love their uncle. The nephews are also very smart and creative. They developed and installed some sort of device in Gyro's teleporter!! No one knows what it does! It's a secret...

Today: Donald is about to go on a dangerous trip around the world. The nephews think it's "cool"!! They'll help him to be the most "cool" yet!...

Goal in life: To have fun!!!

Motto: "1 nephew is good. 2 nephews are better. 3 nephews are COOL!!!"



GLADSTONE GANDER

Gladstone is Donald Duck's cousin. Like Donald, Gladstone is ready to try anything to win Daisy's heart. Needless to say, this could cause some unnecessary competition between the two. Gladstone and Donald don't like each other a whole lot!! Gladstone is also the world's luckiest duck! But for all his luck, he never seems to be able to soften Daisy's heart...

Today: Like Donald, Gladstone is going on a dangerous trip around the world to save Daisy. But, he should've listened to Gyro first...



Goal in life: To have fun... Oh, and rescue Daisy, of course.

Motto: "I think, the reason for living is when... Whoa! What do you know! I just found a Nickell!"



16

DONALD'S ENEMIES

MERLOCK

Merlock is an evil and unscrupulous breed. He dreams of taking over the world. Thanks to the jewel he wears around his neck, his magic powers are awesome and startling. He is very sly, and is always transforming himself to surprise his prey. He lives in an imaginary ancient temple that's almost impossible to find. According to him, he's the one who caused Atlantis to sink.

Today: Merlock is building a strange machine. When it's finished, he wants Daisy to tell the whole world how powerful he is...

Goal in life: "Everyone must recognize his greatness and tremble before him."

Motto: "Ha, ha, ha, haaaaaa...!!!"

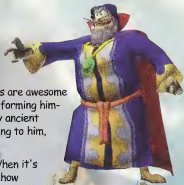
BERNADETTE THE BIRD

Bernadette is a strange bird. Mountain legend says that the summit is inaccessible because a giant bird rules over it. You know what? It's true!!

Today: She guards the top of Duckie Mountain.

Goal in life: To guard her home, on the highest mountain in the world.

Motto: "Tweet-tweet!"



17



THE BEAGLE BOYS

The Beagles Boys are a bunch of thieves. They dream of owning all the riches of the world. They're ugly, empty-headed and bumbling... But, there are a lot of them, which makes them dangerous. Donald should watch out. Recently, the Beagles managed to take over the tallest building in the city! Maybe times have changed...

Today: They protect their hideout, located in the tallest building in Duckburg!

Goal in life: To be the richest thieves of all time.

Motto: "People think we're dumb, but we're worse than they think!"



MAGICA DE SPELL

Magica De Spell is a formidable witch. She lives in a sinister flying mansion. Her magical powers are awesome, but her uncontrollable hatred for Donald Duck often drives her to make stupid mistakes! Unfortunately for her, her mistakes always ruin her most diabolical plans!

Today: No one really knows what she does. It's a mystery...

Goal in life: To stop Donald Duck and his friends, and then... who knows!

Motto: "Abra-duck-abraaaaa!!!..."



CREDITS

Ubi Soft Game Development Team

Game Development Manager
Abdelhak Elguess

Project Manager
Abdelhak Elguess
with Tarik Baali

Morocco
Production Manager
Mathieu Ferland

Lead Programming
Mohammed Saddoune
Olivier Jaourdan

Lead Design
Jason Arsenault

Lead Level Design
Vincent Monnier

Lead Animator
Fouad Jeniani
Jason Arsenault

Artistic Director
Mohamed Gambouz

Art Conception
Jean-Francois Malouin

Lead Graphic
Fabrice Holbe
Omar Bouhmadi
Wafa Benhamou

Lead Sound
Mohamed Robia

Lead Info design
Olivier Jaourdan
Rachid Sikkou

Storyline
Phillipe Debay

Game Design

Game Designers
Abdelwahad Benyaya
Mustapha Mahrach
Jason Arsenault
Vincent Monnier

Level Designers
Abdelwahad Benyaya
Brahim Souifidi
Jawad Alouani
Mehdi Daou El Makane
Mustapha Mahrach
Omar Bouhmadi
Yassine Lahrichi
Younes el Guerrab
Mohamed Gambouz

Mounir Riday

Concept Manager
Patrice Desilets

Graphics

Modeling
Abdelhamid Benali
Christophe Dur
Jawad Alouani
Mouhcine Hachami
Omar Bouhmadi
Rida Amarti
Salah Edinne Serraf
Wafa Benhamou
Fatima Seihani
Abdelmounji Bouanani
Younes El Guerrab
Mohamed Gambouz

Textures
Mohamed Senaji
Abdelhamid Benali
Mohamed Berro

Animation
Abdellah Tejjaj
Fouad Jeniani
Mahamed El youssoufi
Youssef Daou el Makane
Youssef el Aokouchi

Programming

Programmers
Engine
Abdelhaq Rharsalla
Mohammed El Ghouat
Mohammed Saddoune

Behavior
Abderrazac Elkoouni
Amal Aghai
Idir Bouhmadi
Imad Bakioui
Said Azza
Said Fellah Semloli
Sa'Od Lafsishi
Rachid Sikkou

Special Effects
Said Amezyane
Adil Tahri
Louhcine Kabir

Data Manager
Moulay Driss Echad

Sound

Sound Designers
Mohomed Rabio
Yassine Abouelffeiah

Artistic Director
Manu Bachet

Music
Daniel Masson

Fx
Big-Wheels

Audio Production
Manager
Sylvain Brunet.
Joelle Caroline

Localisation

Translation Manager
Chadi Lebbois
with Ryan Valade

Integration
Idin Boumahdi
Jean-François Trudeau
Jean-Robert Michel
Peter Zsurka

Tests

Tests Manager
Bruno Bellavance

Tests Assistant
Max Bricault

Testers
Alain Chenier
Alexandre Doucet
David Deschines
Eric Bouchard
Jonathan Pépin
Mathieu Fortin
Merouan Benkhalfa
Najib Achbor
Najib Ichamad

Pierre-Yves Savard
Simon Auger-Lapointe
Simon Martel
Tarik Tikrik

Groupware Method
System
Houssemeddine Belkhouja
Leila Raffin
Abdelhaq Errami
Abdelaziz Bennouna

Marketing

EMEA marketing team
Emilie Pujol
Laura Gélis
Lionel Roudil

Marketing Project
Manager
Caroline Martin
with
Stéphane Cardin

Ubi Soft Management

Producer
Alain Tascan

Project Leader
Benoit Galarneau

Morocco
Production Manager
Mothieu Ferland

Morocco - Programming
Manager
Olivier Jourdan

Morocco - Game Design
Manager
Jason Arsenault

Morocco - Graphic
Manager
Fabrice Holbe

Morocco - General
Manager
Stéphane Faureau

Planning
Brahim Laxouina

World QA Managers
Serge Hascoet
Christine Chosson
Guenaële Mendroux
Jean Marc Geoffroy
Michael Guez

World Production
Manager
Christine Burgess
QuÉmar

Ubi Soft - President /
General Director
Yves Guillemot

Ubi Soft Cinematics

Director
Valérie Pouyanne

Production Supervisor
Marianne Souliez

Production Managers
Eric Pepin
Sophie Penziki

Storyboard
Jamie Helman

3D Layout

Supervisor
Mathieu Breda

Layoutmen
Avlany Ramassamy
Corinne Bouvier

Detection/checking
Aurora Manthe
Etienne Goueslain

Character Modeling

Technical Director
Emile Ghorayeb

Supervisor
Marc Bouchard

Modelers
Olivier Fournier
Pascal Beaulieu
Mélanie Caron

Jean-Pierre Barrette

Animation

Animation Supervisor
Jamie Helman

Animators
Antonin Plante
François Coté
Allan Treitz
Jean Thierry Roy
Christian Dion
Bryan theberge
Valérie Pouyanne
Emile Ghorayeb

Backgrounds and Props

Supervisor & Artistic
Director
Geneviève Dufour

Modeling and Mapping
Christian Lemire
Mario Brousseau
Isabelle Gagnon
Sebastien Laporte
With the collaboration of
Yannick Jacques
Eric Poulin
David Giraud

2D Color Reference
Daniel Perron

Lighting and Rendering

Supervisor & Artistic Director
Michael Yeomans

Rendering
Edouard Kachaami
Dany Bergeron
Isabelle Gagnon
Karim Rouissi

SFX

Supervisors
Catherine Nolin
François Gendron

SFX
Jean Thierry Roy
Dany Bergeron
Allan Treitz
Christian Dion

Music and Sound Producer
Didier Lord

Delegated Producer
Noémie Dupuy

Production coordinator
Jérémi Valiquette

Production Assistant
Frédérique Corbou

Ubi Music Publishing
Julie Lachance

Artistic Director
Jean Massicotte

Music Composed and Performed by
Shown K. Clement

Music and Kinematics
Mixed at Ubi Music
Studio Montreal

Sound Engineer
Simon Pressey

Engineer assistant
Olivier Germain

Foley/SFX Production Manager
Josué Beaucage

Foley Artist
Chris Piggings

Sound Post-Production Manager
Nicholas Grimwood

Video and Voice Production Manager
Marie-léne Grégoire

Video editor
François Roussel

Special Thanks to Donald Duck, our favorite friend since one year.

Ronan Bel
Poulaine Jacquey
Olivier Didelot
Marc Villemain François
Quenneic Frédéric Balint
Olivier Saillont
RÉmy Laumont
Alain Robin
Xavier Billaut
Christophe Roguet
Lahoucine Homdame
Olivier Daubo
Yann Maan
Benjamin Haddad
Martin Dufour
Cyril Derouineau
Mothieu Fournaison
Seba Cosor
Iskander, Tarik, Ida,
Rachid El Idrissi,
Ronan, Sandrine,
Hicham, Zineb Youssef
and all childs that help us to set the game.

Ubi Soft say Hi to Sébastien, designer on Rayman 2.

Disney Interactive

Producer
Luigi Priore

Associate Producer
William "Chip" Beaman

V.P., Production,
Burbank Studio
Don Winters

Character Art Direction
John Later

Additional Art
Jason Chayes
Tom Barlow

Senior Manager,
Marketing
Sue Fuller

Marketing Assistant
Sue Elliott

Assistant Manager,
Marketing Services
Nino Härju

Localization

Manager, Europe
Catherine Duperron

Production Supervisor
Localization
Kate Farmer
Associate Producer,
Localization
Ticket Corson

With The Voice Talents of
Tony Anselmo
Corey Burton
June Foray
Tress MacNeille
Russi Toller
Frank Welker.

Disney Character Voices
Rick Dempsey
Susie Lum
Beth Glenday
Randy Coppinger
Vicki Rondou
Ned Lott
Dione Passerilli

Special Thanks to
Christina Vann
Renee Johnson
Patrick Larkin
Tamira Webster

UBI SOFT US

Marketing Manager-
Mona Hamilton

Public Relations-
Sandra Yee
Dana Whitney
Melanie Hodgson

Promotions-
Randy Gordon

Helene Juguet

Packaging Design-
Price Design Team

Special Thanks:
Laurent Detoc
David Bamberger
Corey Fong
Dennis Ray
John Chowanec
Jennifer Groeling
Rich Kubiszewski
Willie Wareham
Kathleen Lynch
Kristen Hecht
Mari Sakai
Kevin Lalli
Kawai Corvalho
Anthony Franco

To the Memory of
Carl Barks. 1901-2000

©Disney

NOTES



PROOF OF PURCHASE

©Disney

UBI SOFT ENTERTAINMENT, INC. LIMITED WARRANTY

Ubi Soft Entertainment warrants to the original purchaser that the optical media on which Disney's Donald Duck Goin' Quackers is distributed is free from defects in materials and workmanship for a period of ninety (90) days from the date of purchase. This Ubi Soft, Inc. software program is sold "as is", without express or implied warranty of any kind, and Ubi Soft is not liable for any losses or damages of any kind resulting from the use of this program. Ubi Soft, Inc. agrees for a period of ninety (90) days to replace defective media free of charge, provided you return the defective item with dated proof of payment to the store from which this product was purchased. This warranty shall not be applicable and shall be void if the defect in the Ubi Soft, Inc. software product has risen through abuse, unreasonable use, mistreatment or neglect.

LIMITATIONS - This warranty is in lieu of all other warranties and no other representations or claims of any nature shall be binding on or obligate Ubi Soft, Inc. Any implied warranties applicable to this software product, including its quality, performance, merchantability and fitness for a particular purpose, are limited to the ninety (90) day period described above. In no event will Ubi Soft, Inc. be liable for any direct, indirect, special, incidental, or consequential damages resulting from possession, use, inability to use or malfunction of this Ubi Soft, Inc. software product or documentation, even if advised of the possibility of such damages. In no case shall Ubi Soft, Inc.'s liability exceed the amount of the license fee paid. The warranty and remedies set forth above are exclusive and in lieu of all others, oral or written, express or implied. Some states do not allow limitations as to how long an implied warranty lasts and/or exclusions of liability may not apply to you. This warranty gives you specific rights, and you may also have other rights that vary from state to state.

TECHNICAL SUPPORT - If you need technical assistance with this product, call us at (415)547-4028 Monday through Friday between 8:30AM and 5:30PM, Pacific Standard Time, or write to us at the address noted below. No hints, tips, or codes are available from this phone number or address.

TO REACH US ONLINE - Access our Web Site at <http://www.ubisoft.com>

Ubi Soft
ENTERTAINMENT

Ubi Soft Entertainment, Inc. 625 Third Street 9th Floor, San Francisco, CA 94107

© Disney © 2000 Ubi Soft Entertainment. Sega, Dreamcast and the Dreamcast logo are either registered trademarks or trademarks of Sega Enterprises, LTD. All rights reserved.

ESRB RATING

This product has been rated by the Entertainment Software Rating Board. For information about the ESRB rating, or to comment about the appropriateness of the rating, please contact the ESRB at 1-800-771-3772.

Sega is registered in the US Patent and Trademark Office. Sega, Dreamcast and the Dreamcast logo are either registered trademarks or trademarks of Sega Enterprises, LTD. All Rights Reserved. Made and printed in the USA. W0000102. Operates only with NTSC video games and Sega Dreamcast systems purchased in North and South America (except Argentina, Paraguay and Uruguay). Will not operate with any other televisions or Sega Dreamcast systems. Product covered under one or more of the following U.S. Patents: 5,162,374; 5,225,732; 5,627,032; 5,627,172; 6,143,470; 4,984,556; 4,452,076. For 35,029. Japanese Patent No. 287626. (Please refer to U.S. and other countries.) Service Patent No. 5,112,236. The orange logo is a trademark of the Interactive Digital Software Association. Sega of America Greenbelt, Inc. PO Box 208, San Francisco CA 94110.

SEGA®